

HAND DRYER

Mitsubishi
MElectric
Quality

Jet Towel™

MADE IN JAPAN

THIN
IS IN

Innovative & Compact

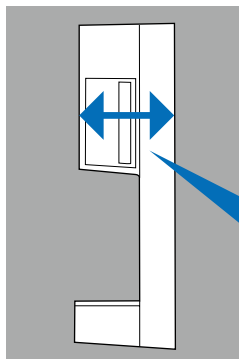
NEW

NSF®

Features Of The New Jet Towel Mini

Fits almost anywhere

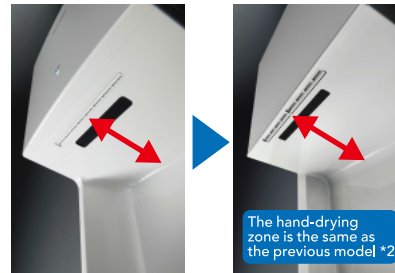
The new Jet Towel Mini has become slimmer compared to the previous model, to fit smaller restrooms with limited installation space.



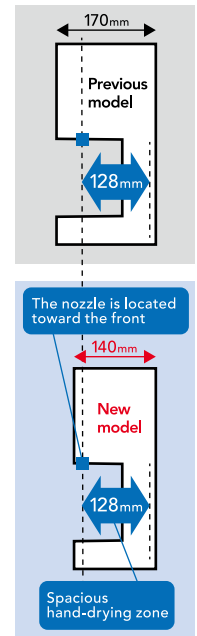
140mm^{*1}
Slimmer by approx. 17%^{*2}

Spacious hand-drying zone

While the unit itself is compact, the new model has a spacious hand-drying zone that is 128mm deep. The nozzle and sensor are located toward the front (*3) for quick drying without touching the unit.



The hand-drying zone is the same as the previous model *2



The nozzle is located toward the front

140mm

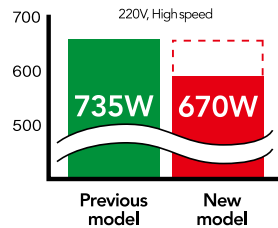
New model
128mm

Spacious hand-drying zone

Improved energy efficiency and simplified maintenance

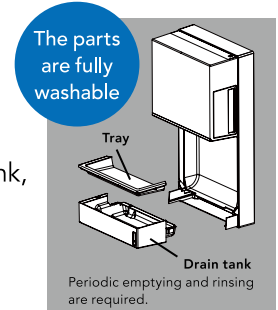
Lower running cost

Power input has been improved by approximately 9% (*4) without degrading the hand-drying performance.



Hygienic design

Maintenance is easier with a removable water catching tray and tank, where grime often accumulates.



The parts are fully washable

Tray
Drain tank
Periodic emptying and rinsing are required.

*1: The upper part of the body (above the hand-inserting area) is 139mm in depth and the thickest part (drain tank) is 143mm in depth.

*2: Compared to the previous model of JT-MC206GS-W-E.

*3: The distance from the front of the body to the nozzle is 8mm.

*4: Compared to the previous model of JT-MC206GS-W-E at 220V (High speed).

Specifications

	Power Supply (50/60Hz)	Mode	Heater	Drying Time*1 (Sec)	Power Consumption (W)	Noise*2 (dB)	Operating mode	Motor Type	Hygienic Features	External Dimensions	Weight (kg)	Drain Tank (L)
Jet Towel Mini JT-MC205JS-W-NE	220-240V 50/60HZ	High	On	4-8	670-750	60-62	3 modes HI/STD/LO	Commutator motor	- Antibacterial surfaces - NSF Certification - Alcohol Cleanable	Width:245 Depth:143(*3) Height:470	4	0.6
			Off		440-520							
		Standard	On	5-9	590-670							
			Off		360-430							
		Low	On	8-13	460-500							
			Off		230-270							

*1: Time needed to reduce remaining water to 150mg or less per hand (in-house study) *2: Measurements made in anechoic chamber at a distance of 2m. *3 The thickest part (drain tank)

MITSUBISHI ELECTRIC CORPORATION

HEAD OFFICE : TOKYO BLDG., 2-7-3 MARUNOUCHI, CHIYODA-KU, TOKYO 100-8310, JAPAN